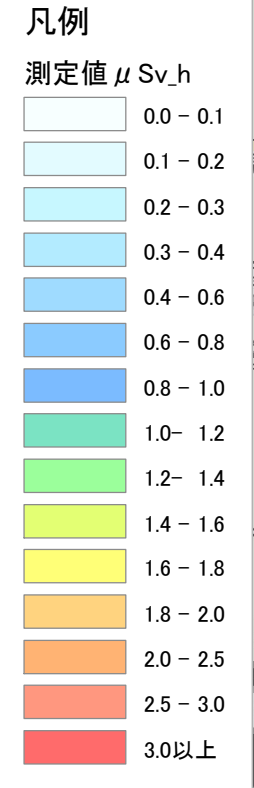
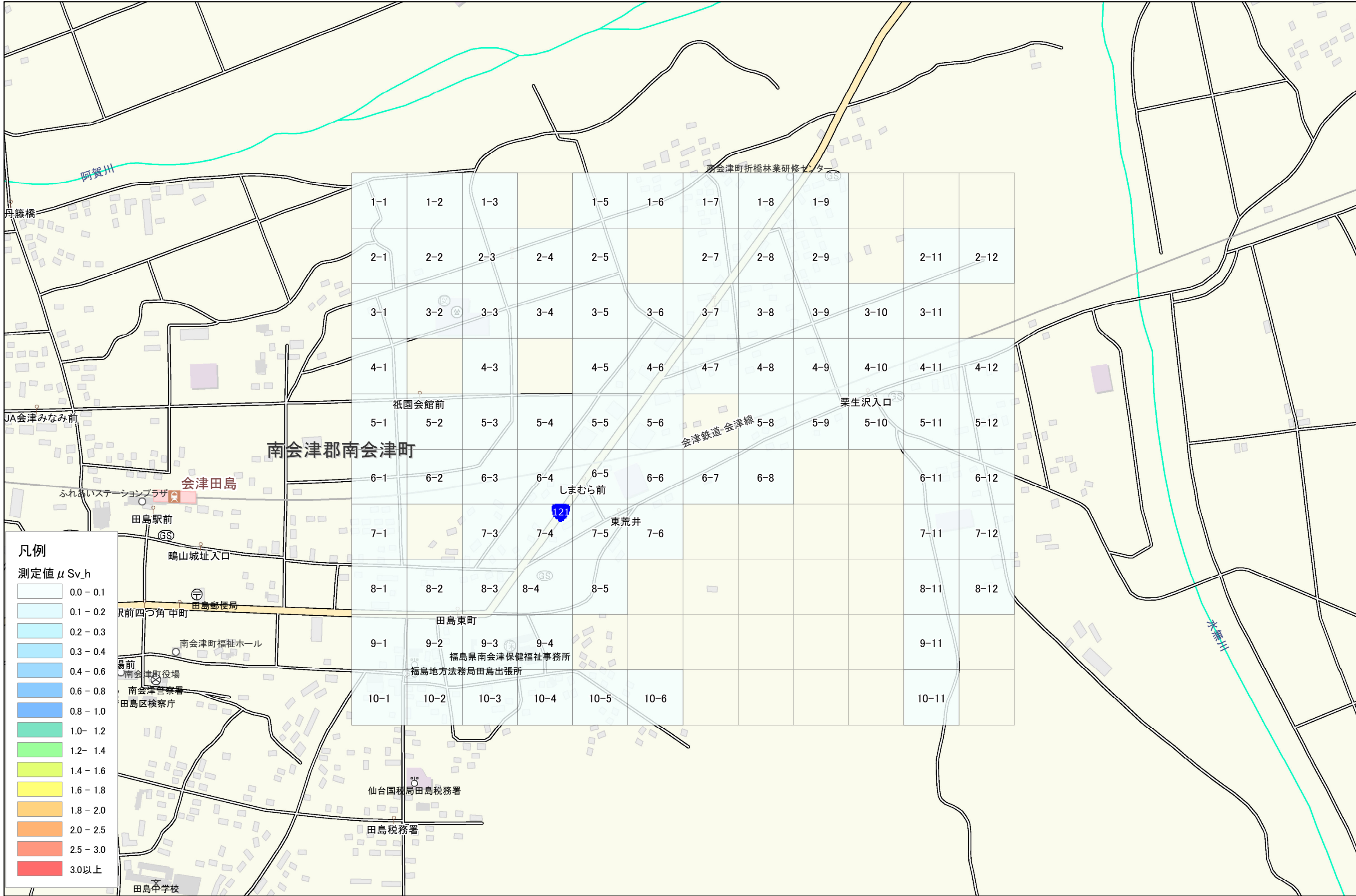
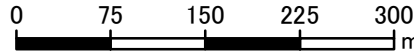


南会津町

田島字東荒井甲付近

1km × 1.2km

1:6,000



1-1	1-2	1-3		1-5	1-6	1-7	1-8	1-9			
2-1	2-2	2-3	2-4	2-5		2-7	2-8	2-9		2-11	2-12
3-1	3-2	3-3	3-4	3-5	3-6	3-7	3-8	3-9	3-10	3-11	
4-1		4-3		4-5	4-6	4-7	4-8	4-9	4-10	4-11	4-12
5-1	5-2	5-3	5-4	5-5	5-6	5-8	5-9	5-10	5-11	5-12	
6-1	6-2	6-3	6-4	6-5	6-6	6-7	6-8		6-11	6-12	
7-1		7-3	7-4	7-5	7-6				7-11	7-12	
8-1	8-2	8-3	8-4	8-5					8-11	8-12	
9-1	9-2	9-3	9-4						9-11		
10-1	10-2	10-3	10-4	10-5	10-6				10-11		