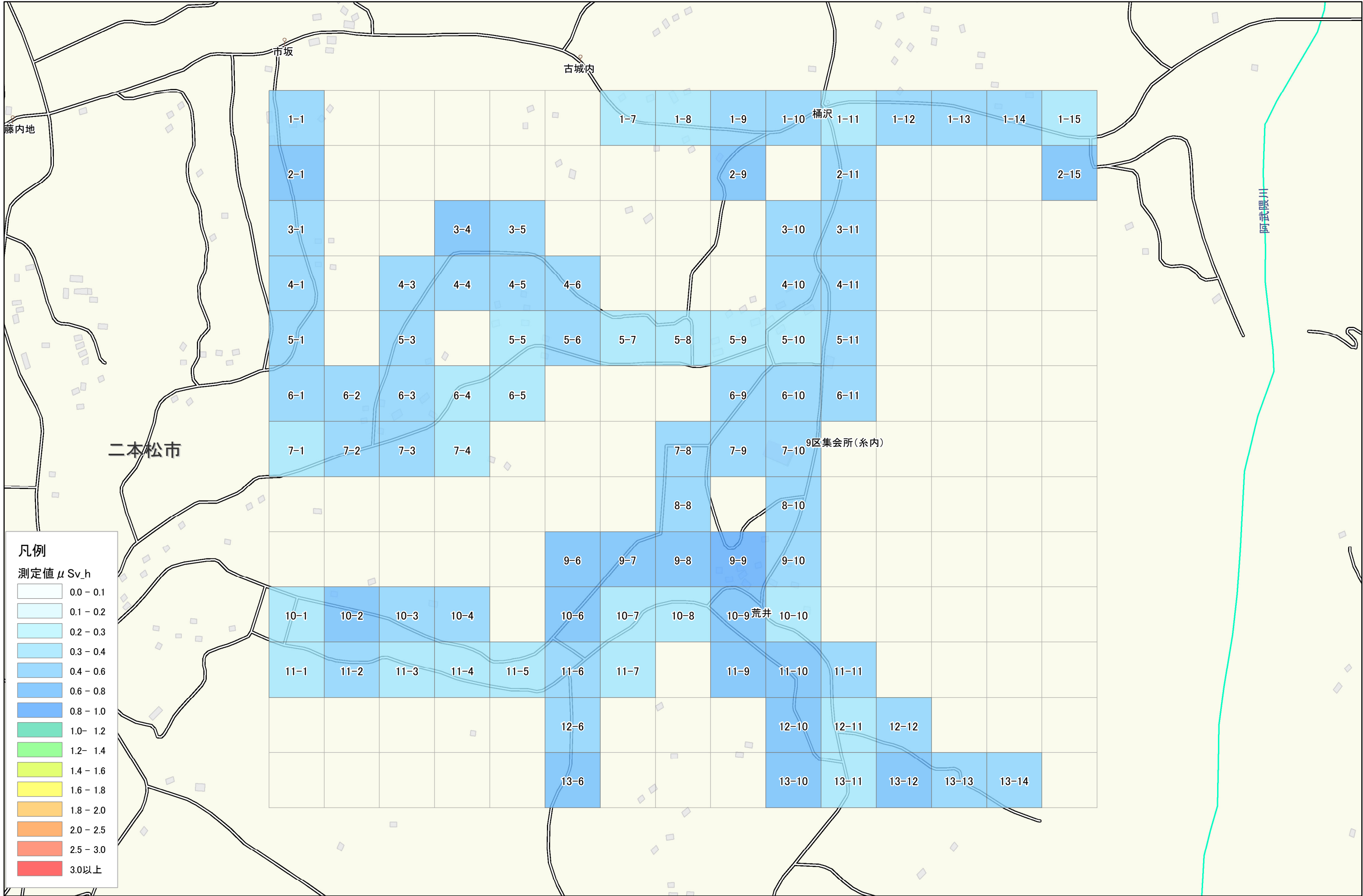
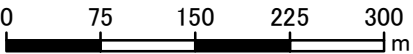


二本松市

上川崎系内付近

1.3km × 1.5km

1:6,000



凡例

測定値 μSv_h

0.0 - 0.1
0.1 - 0.2
0.2 - 0.3
0.3 - 0.4
0.4 - 0.6
0.6 - 0.8
0.8 - 1.0
1.0 - 1.2
1.2 - 1.4
1.4 - 1.6
1.6 - 1.8
1.8 - 2.0
2.0 - 2.5
2.5 - 3.0
3.0以上

1-1						1-7	1-8	1-9	1-10	桶沢	1-11	1-12	1-13	1-14	1-15
2-1								2-9			2-11				2-15
3-1			3-4	3-5							3-10	3-11			
4-1		4-3	4-4	4-5	4-6						4-10	4-11			
5-1		5-3		5-5	5-6	5-7	5-8	5-9	5-10	5-11					
6-1	6-2	6-3	6-4	6-5				6-9	6-10	6-11					
7-1	7-2	7-3	7-4					7-8	7-9	7-10	9区集会所(系内)				
								8-8		8-10					
						9-6	9-7	9-8	9-9	9-10					
10-1	10-2	10-3	10-4			10-6	10-7	10-8	10-9	荒井	10-10				
11-1	11-2	11-3	11-4	11-5	11-6	11-7			11-9	11-10	11-11				
						12-6				12-10	12-11	12-12			
						13-6				13-10	13-11	13-12	13-13	13-14	