



# When a Heavy Rainfall Warning is Issued

(or is Likely to be Issued)

## Actions to Take Indoors



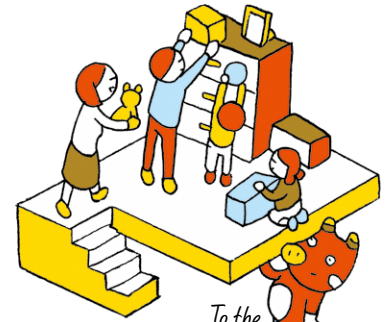
*Safety first*

**Avoid going out unless absolutely necessary.**



*Choose what is necessary.*

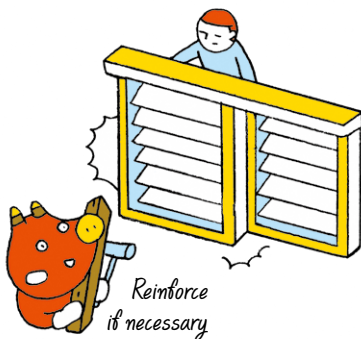
**Select the items to be put in an emergency kit you carry with you as you evacuate and put the kit ready in a bag.**



*To the second floor or attic*

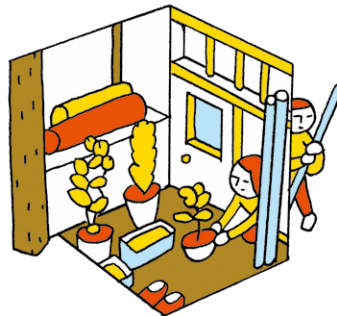
**Move important items to a higher place to protect them from flooding**

## Actions to Take Outdoors



*Reinforce if necessary*

**Firmly lock windows and shutters and reinforce them as required.**



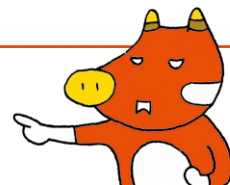
**Move laundry poles, plant pots or other items that are likely to be blown away by wind to indoors.**



*Constantly*

**Regularly clean rain gutters and side gutters and maintain good drainage.**

**When a rainstorm intensifies, do not ever try to reinforce windows or get close to a river, beach or canal.**



*Essential!*