

Lake INAWASHIRO

Rule Book

**Personal Watercrafts, Motorboats, SUPs and Rowing Boats can only be operated in approved areas.
Please follow the rules and enjoy a safe ride.**



Fukushima Prefecture
Lake Inawashiro Waters Utilisation Council

1 July 2024

Ensuring total safety: To prevent the accident from happening again

**In September 2020, a serious fatal accident
occurred at Lake Inawashiro.**

**In order to prevent accidents and ensure that everyone can enjoy
the Lake safely and securely, Fukushima Prefecture and the Lake
Inawashiro Water Utilisation Council have designated areas
where personal watercraft and motorboats can and cannot be
operated, and have created a rulebook for all lake users.**



Introduction

What is Important

We want everyone to enjoy the lake safely. In order to achieve this, it's important that everyone respects the rules and takes other users and local residents into account above all else.

Maintain the Beauty of the Lake

- Take cigarette butts and any garbage with you.
- Pick up any rubbish you see so that you can leave Lake Inawashiro in a better state than when you arrived.

Park Your Car in the Designated Parking Areas

- Street parking obstructs local traffic.
- Street parking increases the risk of accidents involving children.
- Park in designated areas and contribute to the prevention of traffic accidents.

For more details about the rules of Lake Inawashiro, please scan the QR code shown right for the website of River Planning Division (Japanese Only).

(<https://www.pref.fukushima.lg.jp/sec/41045a/inawashiroko-riyou.html>)



Areal Restrictions by the River Act

Restricted Areas under the River Act

In order for everyone to enjoy the lake safely and securely, designated areas for the operation of personal watercrafts, motorboats, etc., and areas where the operation is prohibited have been established under Article 16-2, Paragraph 3 of the River Act Enforcement Ordinance.

(1) Designated Areas for Powered Vessels

Designated Areas for Powered Vessels is a zone where vessels such as PWCs and motorboats **can operate under speed restrictions (slow speed, deceleration). Dangerous manoeuvres such as sudden starts, rapid acceleration and sharp turns are prohibited.**

Additionally, non-powered vessels such as rowboats, SUPs and windsurfers are not allowed to navigate in this area.

(2) Prohibited Areas for Powered Vessels

In Prohibited Areas for Powered Vessels, powered vessels such as PWCs and motorboats are not allowed to operate, except in emergency situations such as life-saving operations.

The extent and duration of the swimming areas are subject to regulations stipulated in an ordinance concerning the prevention of accidents involving recreational fishers and motorboats.

Commercial fisheries are exempt from these regulations. For recreational fishers, restrictions apply throughout the year at Joko, Shida, Tenjin and Matsunashi Beaches, from 1 July to 31 August for other beaches. (For details on the permitted periods and areas for recreational fishing, please contact the Inawashiro-Akimoto Non-investment Fisheries Cooperative.)

(3) Penal Provisions

In the event of a confirmed violation, **a fine of up to 300,000 yen** will be imposed in accordance with Article 109 of the River Act and Article 60 of the Enforcement Order of the Act.

Voluntary Rules (1)

Rules for Safe Use

The Lake Inawashiro Waters Utilisation Council (hereinafter referred to as the “Council”) has established voluntary rules to ensure the safe use of Lake Inawashiro.

(1) Utilisation Period of the Lake

From early May to the second Sunday of October

(2) Hours of Utilisation

May - August	8:00 - 18:00
September - October	8:00 - 16:00

(3) Restricted Areas

For environmental conservation of Lake Inawashiro, the use of powered and non-powered vessels, excluding commercial and recreational fishers (fishing), is prohibited within approximately 300 meters from the shore.

(4) Rules for Each Beach

At each beach, the regional subcommittees, the subordinate bodies of the Council, have established rules to ensure safe use. Please follow the rule book and the signs at each beach.

(5) Safety Precautions

[For Everyone]

- Please make sure to confirm the areas where watercrafts and swimming are allowed by referring to the rule book and local signs.
- Check the weather, water and air temperature on the day, and use appropriate equipment (such as wetsuits) according to the conditions.

Voluntary Rule (2)

[For Users of Powered and Non-Powered Vessels]

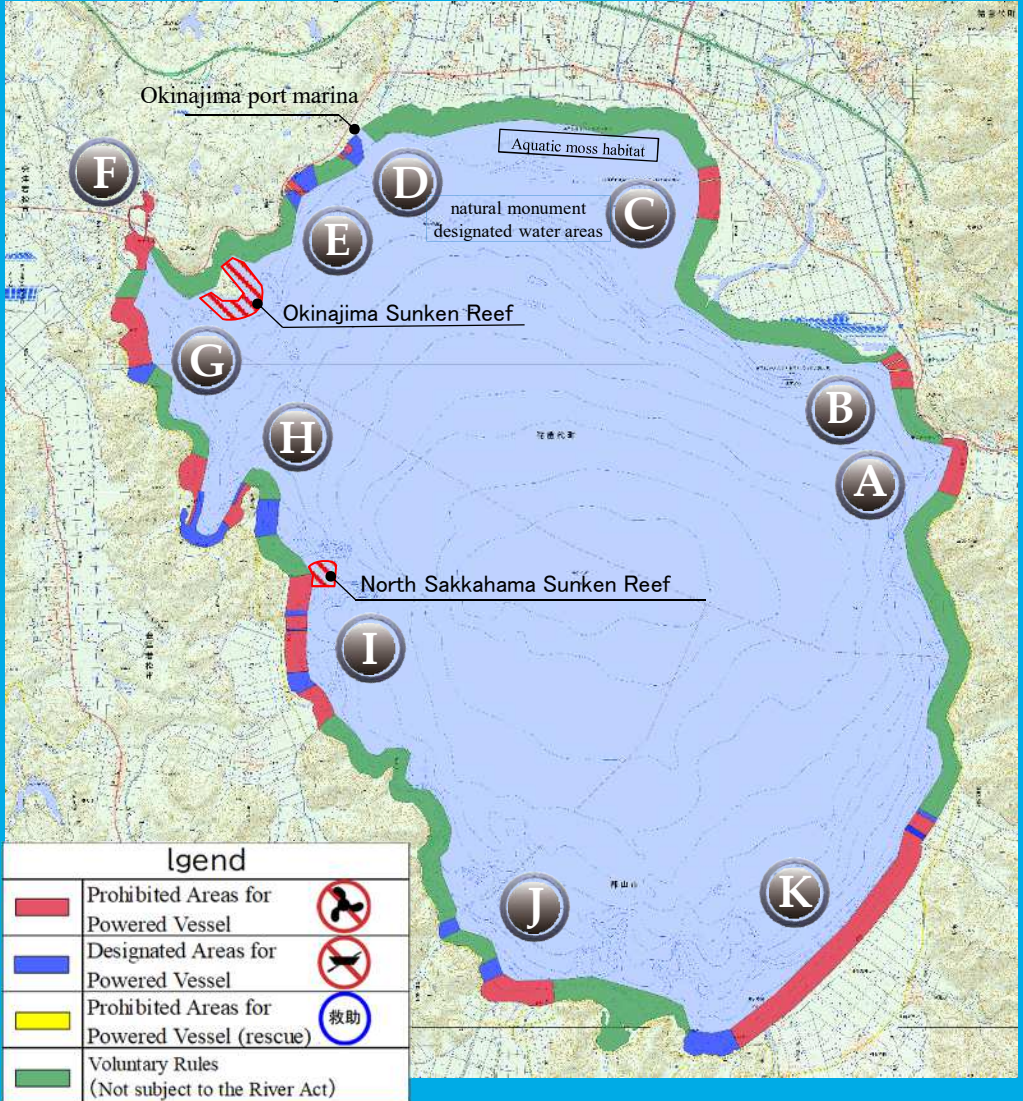
- As a general rule, please wear a life jacket (personal flotation device).
- In case of an emergency, carry a mobile phone in a waterproof bag so that you can call for help.
- Carry your boat operator license and ship inspection certificate.
- When unloading vessels or watercrafts, please use designated areas such as parking lots in order to avoid obstructing those passing by.
- Except for authorised vehicles, do not drive cars onto the beach as it inconveniences other users.
- When travelling long distances, use two or more vessels. If you are travelling with only one vessel, stay within a range where the administrator can see you.

[For Towing Sports]

- **Board and disembark at the lakeshore or designated areas. Do not wait for your turn on the lake surface away from the shore, as it is dangerous.**
- Ensure safety by having someone who can properly observe on the personal watercrafts or motorboats.
- If a person riding the towed object falls into the water, immediately slow down and ensure their safety.
- Those towing the objects should carefully observe their surroundings to ensure that the towed object does not collide with other watercrafts or vessels, and should proceed at a safe speed.
- Those riding the towed object must also wear a life jacket (personal flotation device).

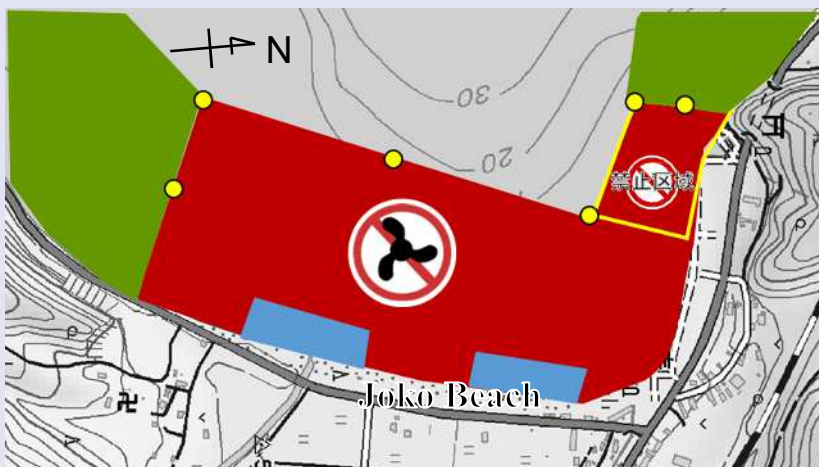
Restricted Areas

- Please respect the rules of Lake Inawashiro and use its waters in a way that is kind to people and the environment. -





Joko Beach



Restrictions by the River Act



Prohibited Areas for Powered Vessel

Swimming Areas (Planned)



Established in Prohibited Areas for Powered Vessel, no powered vessel shall be allowed

Voluntary Rules of the Council



Only rowboats shall be allowed in Prohibited Areas for Powered Vessel (except for No Navigation Areas) at Joko Beach. *commercial fisheries are exempted



All types of vessels, powered- or non-powered, are prohibited. *commercial fisheries are exempted

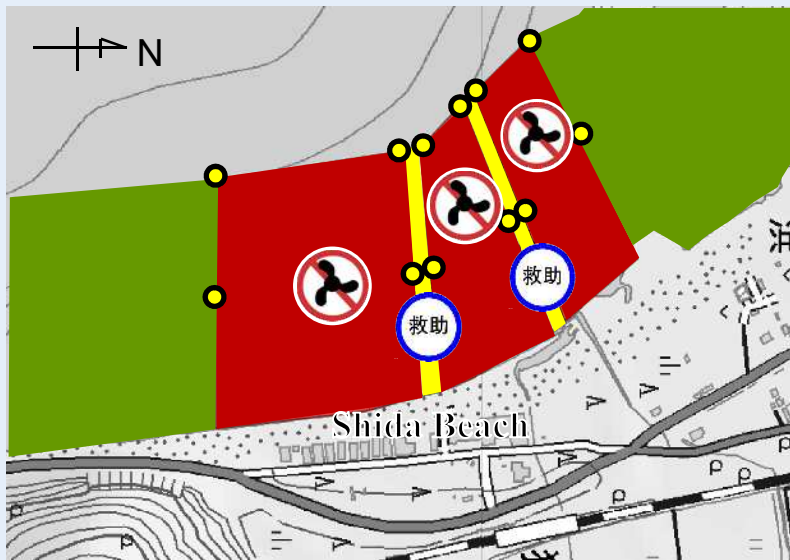


No Navigation Areas

Areas where powered- or non powered vessels are prohibited to preserve environment *commercial fisheries are exempted

The restrictions under the River Act and the voluntary rules are shown in separate diagrams. Please check both the top and bottom sections.

Restricted Areas



Restriction by the River Act



Prohibited Areas for Powered Vessel



Prohibited Areas for Powered Vessel (Rescue)

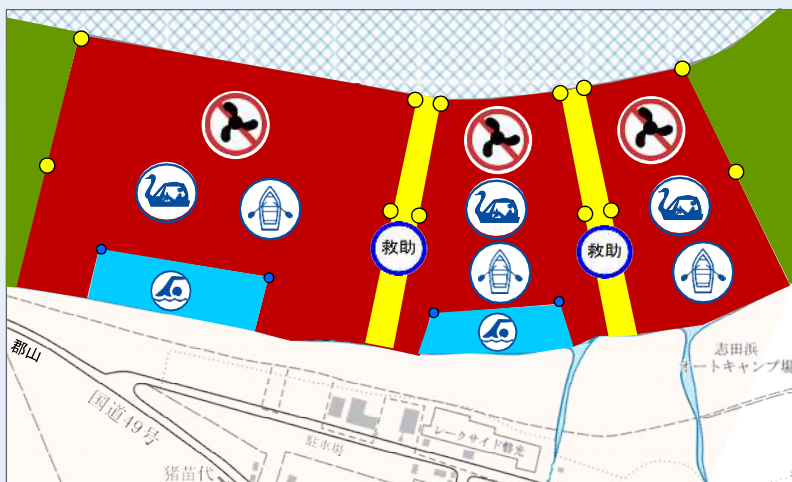
Voluntary Rules of the Council



No Navigation Areas

Voluntary Rules

No watercraft are allowed except for rowboats and pedal boats. In emergencies, PWCs and motorboats may navigate within the areas marked as



Legend

(Area Designation)



Buoy (River Act)

Buoy (others)

Areas are designated for each use at each beach. Please do not enter areas not designated for your use.

PWCs, Motorboats, and Work Boats for emergency Landing/Departure Area



No Navigation Areas



Matsuhashi/Tenjin Beaches

The restrictions under the River Act and the voluntary rules are shown in separate diagrams. Please check both the top and bottom sections.

Restricted Areas

Restrictions by the River Act



Prohibited Areas for Powered Vessel

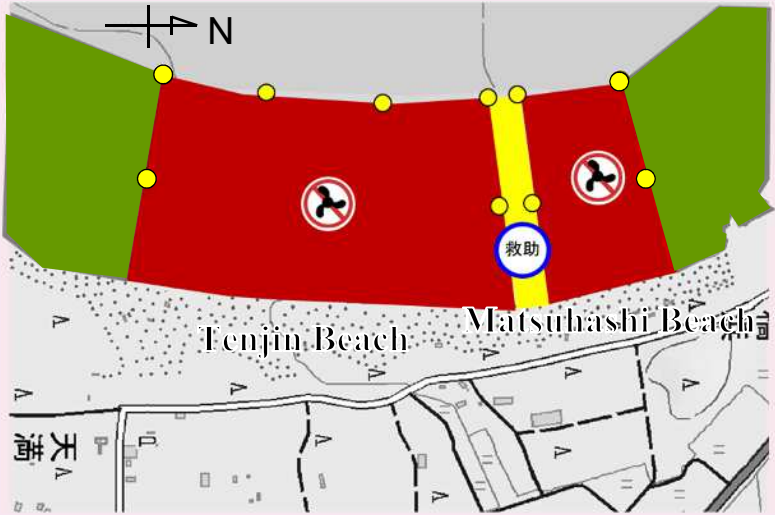


Prohibited Areas for Powered Vessel (rescue)

Voluntary Rules of the Council



No Navigation Areas



Voluntary Rules

Legend

(Area Designation)



PWCs and motorboats are not allowed. At Tenjin Beach, windsurfing and pedal boats are not permitted. For swimming at Tenjin Beach, please follow the instructions of the operators.

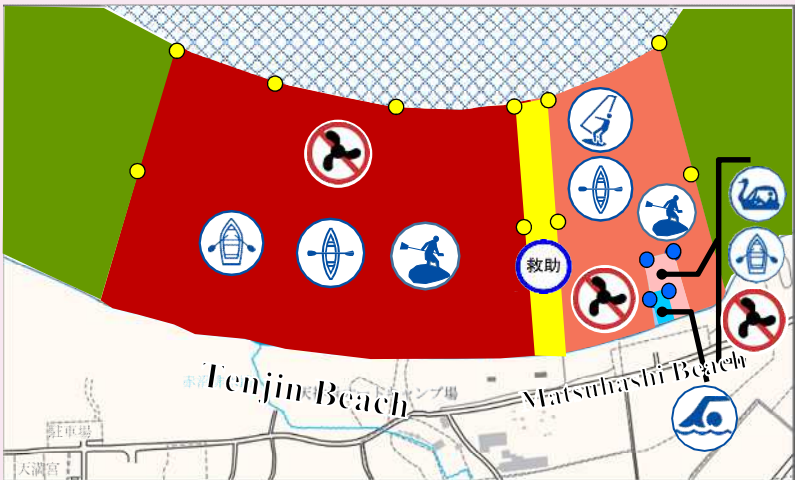
- buoy (River Act)
- buoy (others)

Areas are designated for each use at each beach. Please do not enter areas not designated for your use.

Arrival/Departure Area for PWCs, Motorboats and Work Boats for Emergency



No Navigation Areas

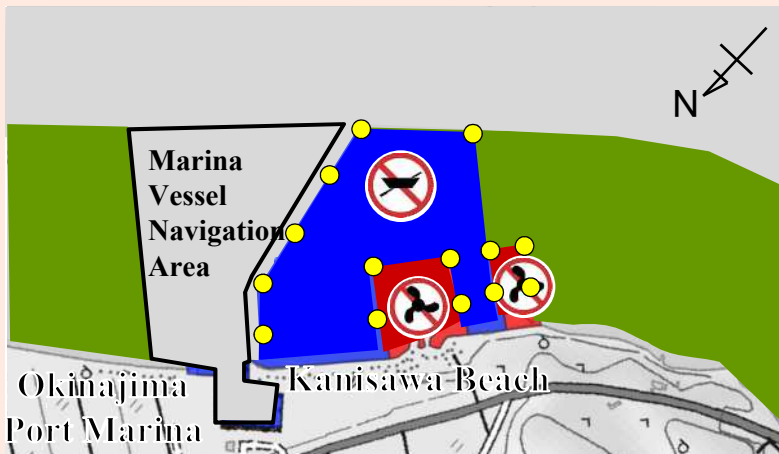




Kanisawa Beach

The restrictions under the River Act and the voluntary rules are shown in separate diagrams. Please check both the top and bottom sections.

Restricted Areas



Restrictions by the River Act



Prohibited Areas for Powered Vessel



Designated Areas for Powered Vessel

Voluntary Rules of the Council



No Navigation Areas

Voluntary Rules

Wind surfing and pedal boats are not allowed. Watch for vessels navigating in the marina vessel navigation area.



Legend

(Area Designation)



Swimmer



Reduced Speed Area for Motorboat



Rowboat



Reduced Speed Area for PWC



Canoe



SUP

● buoy (River Act)

● buoy (others)

Areas are designated for each use at each beach. Please do not enter areas not designated for your use.

■ Marina Vessel Navigation Area

■ No Navigation Areas



Nagahama Beach

The restrictions under the River Act and the voluntary rules are shown in separate diagrams. Please check both the top and bottom sections.

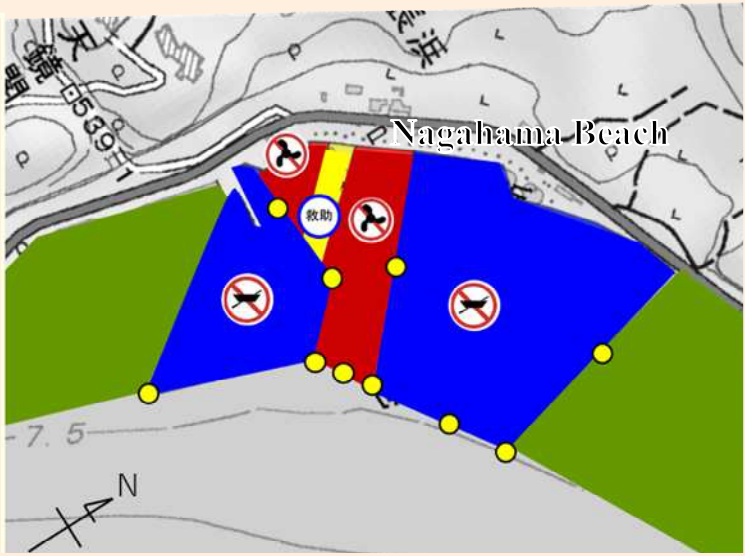
Restricted Areas

Restrictions by the River Act

- Prohibited Areas for Powered Vessel
- Designated Areas for Powered Vessel
- Prohibited Areas for Powered Vessel (rescue)

Voluntary Rules of the Council

- No Navigation Areas



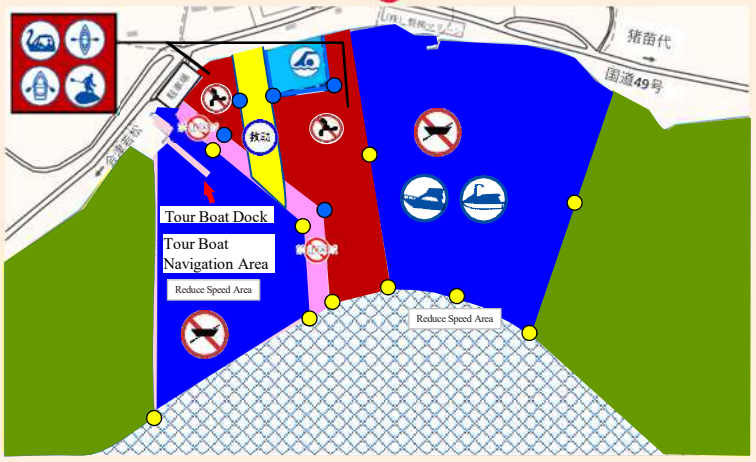
Voluntary Rules

Legend (Area Designation)

- Swimmer
- Reduced Speed Area for Motor boat
- Rowboat
- Reduced Speed Area for PWC
- Pedal Boat
- No Navigation Area for All Vessel
- Canoe
- SUP

- buoy (River Act)
- buoy (others)

Windsurfing is not allowed. Please watch for four boats navigating. All activities are prohibited in the areas marked by 禁止区域.



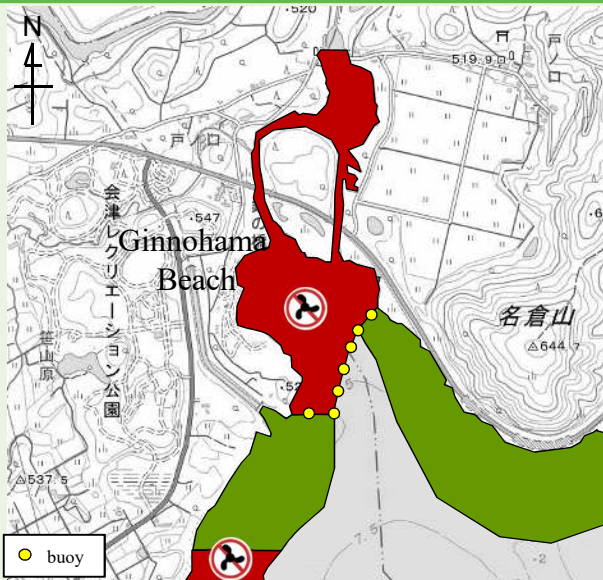
Areas are designated for each use at each beach. Please do not enter areas not designated for your use.

- Arrival/Departure Area for PWCs, Motorboats and Work Boats for Emergency

- No Navigation Areas

F

Ginnohama Beach



Restrictions by the River Act



Prohibited Areas for Powered Vessel

Voluntary Rules of the Council

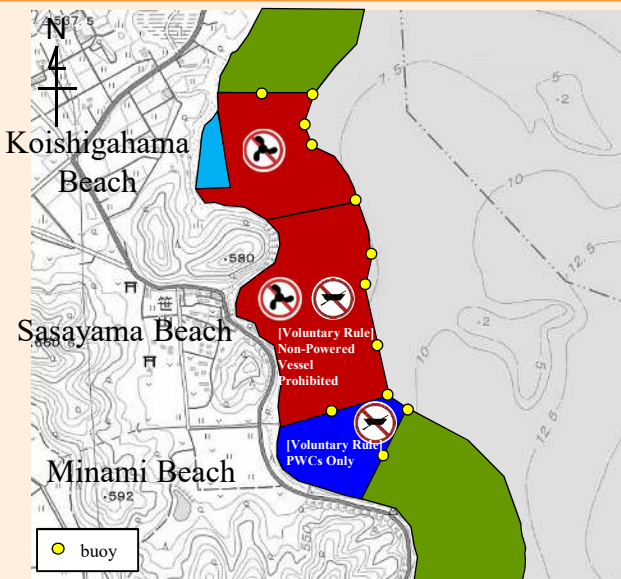


No Navigation Areas

● buoy

G

Koishigahama/Sasayama/Minami Beaches



Restrictions by the River Act



Prohibited Areas for Powered Vessel



Designated Areas for Powered Vessel

Swimming Areas (Planned)



Voluntary Rules of the Council



Prohibition includes non-powered vessel in Sasayama Beach



No Navigation Areas

● buoy

H Nakada Beach

Nakada Beach

Restrictions by the River Act



Prohibited Areas for Powered Vessel



Designated Areas for Powered Vessel

Swimming Areas (Planned)



Powered and Non-Powered Vessel Prohibited



Priority for vessels in boat operator license examination



Loading and unloading area for towing sports users



No Navigation Areas

Voluntary Rules of the Council

Rules for use of area marked by

below:

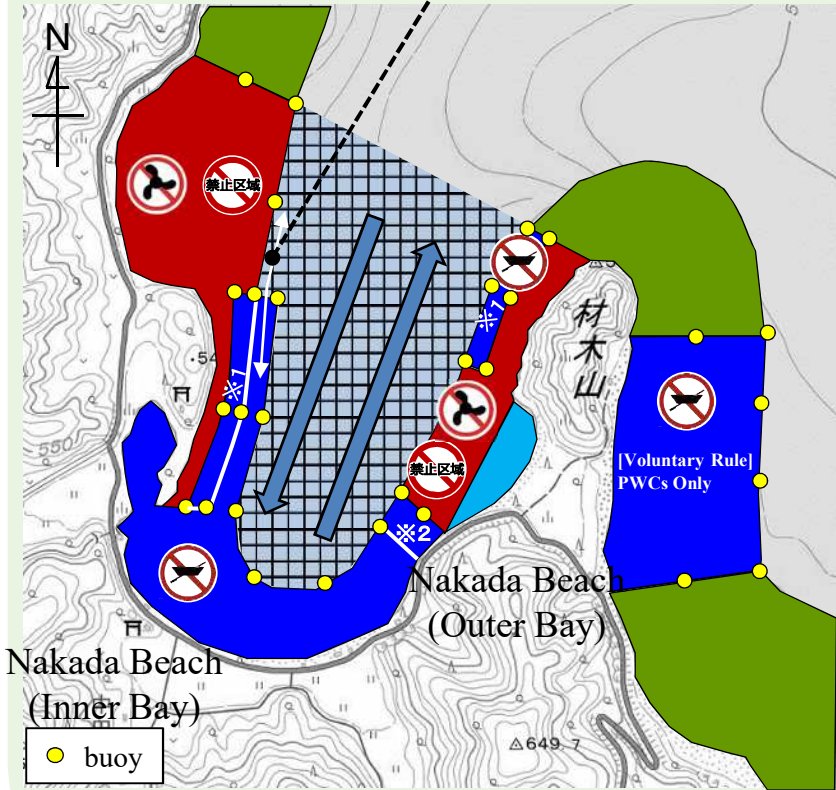
○ No transverse (east-west) navigation allowed.

○ No meandering allowed.

○ No boarding/waiting on the lake surface allowed.

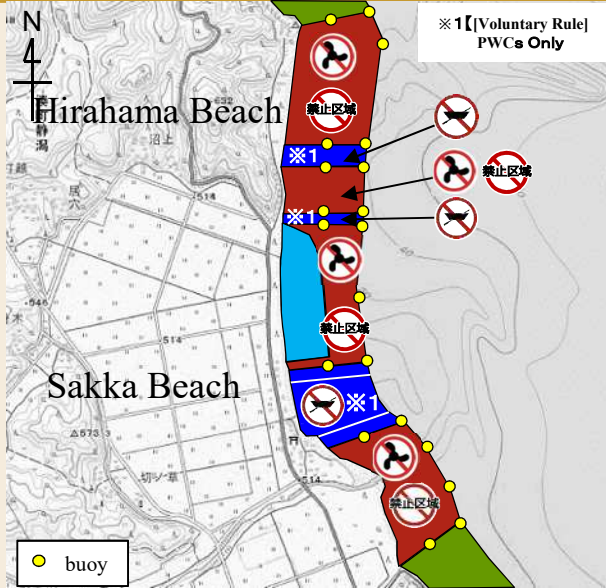
○ Navigation in one direction only.

* Please navigate vessels heading towards the centre of the lake via the western route (white arrow).



I

Hirahama/Sakka Beaches



Restrictions by the River Act

-  Prohibited Areas for Powered Vessel
-  Designated Areas for Powered Vessel

Swimming Areas (Planned)

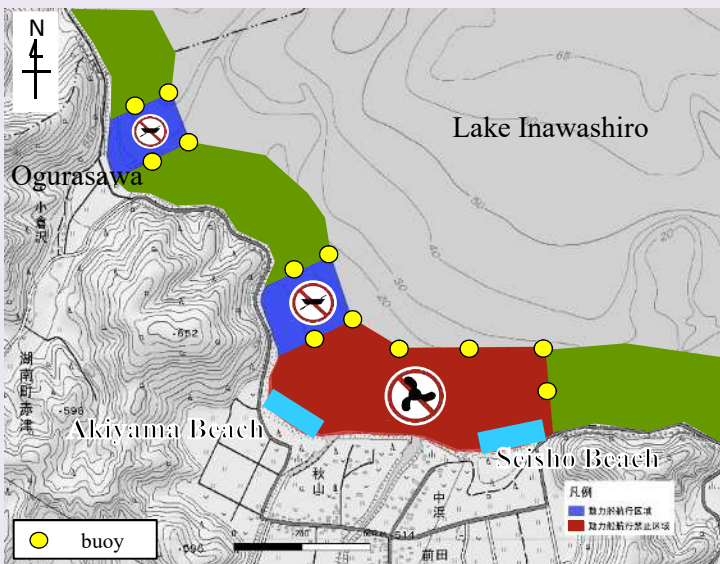


Voluntary Rules of the Council

-  Prohibition includes non-powered vessel in Taira・Sakikawa Beach
-  No Navigation Areas

J

Ogurasawa・Akiyama/Seisho Beaches



Restrictions by the River Act

-  Prohibited Areas for Powered Vessel
-  Designated Areas for Powered Vessel

Swimming Areas (Planned)



Voluntary Rules of the Council

-  No Navigation Areas



Nakanosawa · Konan Port · Funatsu Park · Funatsu Beach – Hamaji/ Tatehama/Yokozawa/Hamaji Beach

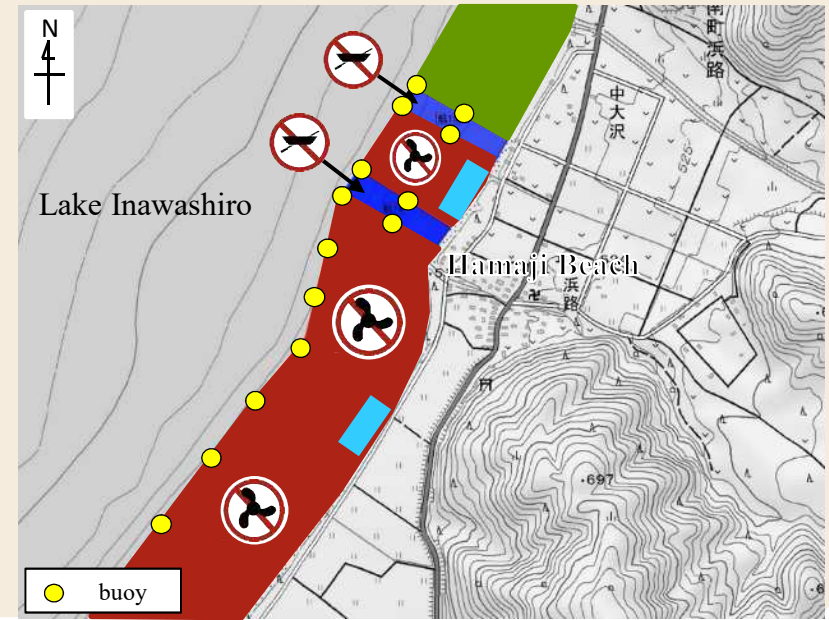
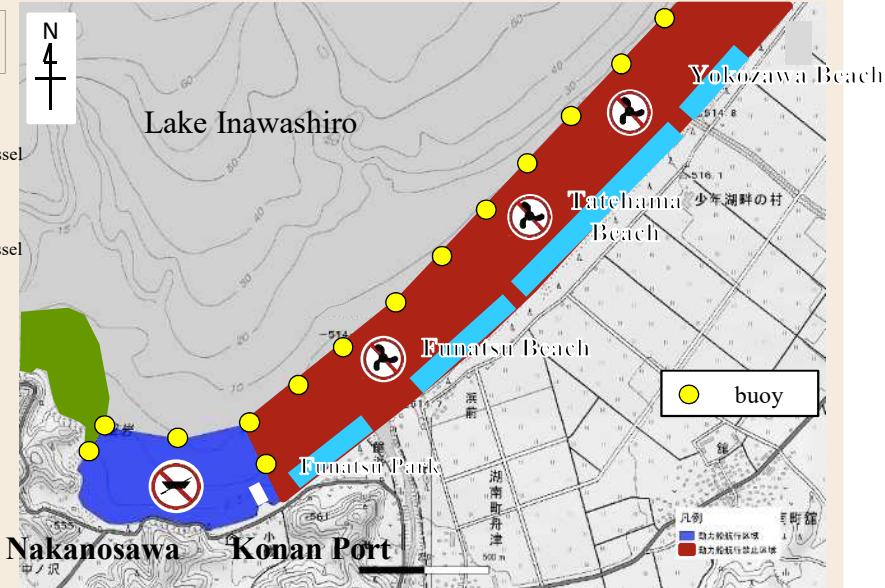
Restrictions by the River Act



Swimming Areas (Planned)



Voluntary Rules of the Council



Related Laws and Regulations

〈Designation of Water Areas and Navigation by the River Act Enforcement Order〉

Navigation and no-navigation areas for powered vessels (such as PWCs, motorboats, etc.) are stipulated.

- 1 **Designation of Class A River Under the River Act**
By the River Act, Lake Inawashiro is designated as a Class A river within the Agano River system.

- 2 **River Act Enforcement Order, Article 16-2, Paragraph 3**
For water areas within the river zone of Class A rivers, where it is recognized by the river administrator that it is necessary to restrict navigation of vessels to prevent significant hindrance to the use of the river, vessels navigating such areas must do so in accordance with the methods specified by the river administrator.

- 3 **River Act Enforcement Order, Article 60, Paragraph 1, Item 2**
Anyone who navigates a vessel in violation of the provisions of Article 16-2, Paragraph 3, shall be subject to a fine of up to 300,000 yen.

- 4 **Designation of Water Areas and Navigation stipulated in Article 16-2, Paragraph 3 of the River Act Enforcement Order (Effective 1 July, 2024)**
For the navigation in designated areas of Lake Inawashiro within the Agano River system, restrictions by the River Act on pages P6 to P15 apply.

Related Laws and Regulations

〈Act on Ships' Officers and Boats' Operators〉

Regulations have been established regarding the qualifications and compliance requirements for operators of small vessels (such as pleasure boats, motorboats and PWCs).

- 1 **Prohibition of Vessel Operation under the Influence**
Vessel operation is prohibited when one's attention and judgment are significantly impaired, such as by alcohol consumption, which may result in an inability to operate vessels properly.

- 2 **Prohibition of Dangerous Operation**
Operating in a manner that poses a danger, such as carelessly entering swimming areas or navigating near swimmers, is prohibited.
* "Swimmers" refers not only to swimmer but also to those engaging in marine leisure activities that do not require a license, such as surfing, diving, yachting, canoeing, water skiing, and using mini boats.

- 3 **Self-Operation by Licensed Individuals**
When operating a PWC on any area of water, or navigating a boat or other vessels within a port area governed by Port Regulation Act or within a navigational route governed by Act on Maritime Traffic Safety, the license holder must operate the vessel directly.

- 4 **Wearing Life Jackets**
The following individuals are required to wear life jackets or similar equipments:
 - Those aboard a personal PWC
 - Children under 12 years old
 - Individuals engaged in fisheries on a single-manned boat
 - Individuals on exposed decks

5 **Conducting Lookout**

To ensure the safety of navigation, a proper lookout must be maintained at all times to sufficiently assess the conditions of the surrounding waters and the movements of other vessels.

6 **Pre-departure Inspection**

Before departure, inspections must be conducted to ensure navigational safety. These include checking the levels of fuel and oil, gathering weather and waterway information, and inspecting the condition of the vessel.

〈 **Ordinance on the Prevention of Accidents Involving Swimmers and Pleasure Motorboats** 〉

1 Vessels are prohibited from navigating in designated swimming areas.

2 In swimming areas, do not disturb swimmers by speeding, making sharp turns, or weaving.

3 **Prohibition of Vessel Operation under the Influence**

Vessel operation is prohibited when one's attention and judgment are significantly impaired, such as by alcohol consumption, which may result in an inability to operate vessels properly.

4 In waters where people are swimming, do not disturb others by speeding, making sharp turns or weaving.

5 Follow the advice given by pleasure motorboat providers or marina operators to prevent water accidents.

◎To All Lake Users

Violations will result in imprisonment or fines.

The following actions are prohibited by law. If you witness any of these actions, please report them to the nearest police station (Dial 110).

[River Law Enforcement Order]

● **Entering prohibited areas for powered vessels such as PWCs and motorboats.**

*Excludes vessels engaged in fishing, vessels permitted by river administrators, and certain other vessels.

● **Sudden acceleration, rapid starts and sharp turns by powered vessels within designated areas.**

● **Non-powered vessels such as canoes, rowboats, SUPs, windsurfing, etc., entering areas designated for powered boats.**

[Ordinance on Prevention of Accidents Involving Swimmers and Pleasure Motorboats]

● **Navigation within swimming areas.**

● **Moving or damaging swimming area markers.**

● **Failure to take necessary measures such as rescuing injured persons when injuries or damage caused by pleasure motorboat navigation.**

● **Operating a vessel while intoxicated or otherwise incapable of proper control.**

Contact Information (for area designations)

Inawashiro Town	A Joko Beach B Shida Beach C Tenjin/Matsuhashi Beaches D Kanisawa Beach E Naga Beach	Commerce, Industry and Tourism Division	0242-62-2117	Kitakata Public Works Office Fukushima Prefectural Government.	0241-24-5717
Aizuwakamatsu City	F Ginnohama Beach G Koishigahama/Sasayama/Minami Beaches H Nakada Beach I Hirahama/Sakka Beaches	Tourism Division	0242-39-1251	Aizuwakamatsu Public Works Office Fukushima Prefectural Government.	0242-29-5438
Koriyama City	J Ogurasawa, Akiyama/Seisho Beaches K Nakanosawa, Konan Port, Funatsu Park, Funatsu/Tatehama/Yokozawa/Hamaji (No.1, No.2) Beaches	Tourism Policy Division	024-924-2621	Ken-chu Public Works Office Fukushima Prefectural Government.	024-935-1449