

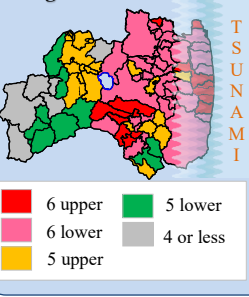
We have compiled visual representations to illustrate the efforts toward the revitalization of Fukushima.

Towards the Realisation of a "New Fukushima"- Tracing the Path of Recovery - (1/2)

25. Mar. 2026

The Extent of the Damage

◆ Seismic Intensity throughout the Prefecture



"The 2011 Tohoku Earthquake" on 11 Mar. recorded magnitude 9.0 and marked one of the largest earthquakes ever recorded in Japan. Along with the damage caused by the earthquake and tsunami, a nuclear disaster also occurred, forcing nearby residents to evacuate the area.

◆ Earthquake Damage ◆ Tsunami Damage ◆ Nuclear disaster

Earthquake damage: Sukagawa City
Tsunami damage: Namie Town
Before the disaster
Hydrogen explosion at Unit 1 reactor building (12 Mar. 2011)

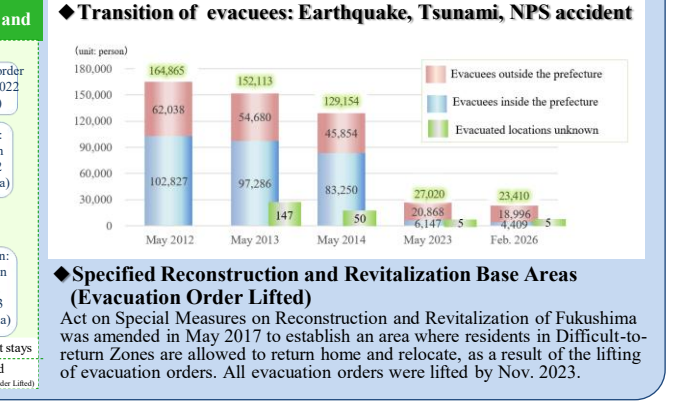
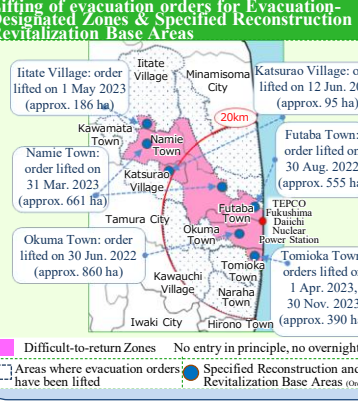
Casualties [As of 1 Feb 2026]
■ Deaths 4,181
(This number includes 2,350 disaster-related deaths)

Status of housing damage [As of 1 Feb 2026]
■ Totally destroyed: 15,600 houses
■ Half destroyed: 87,355 houses

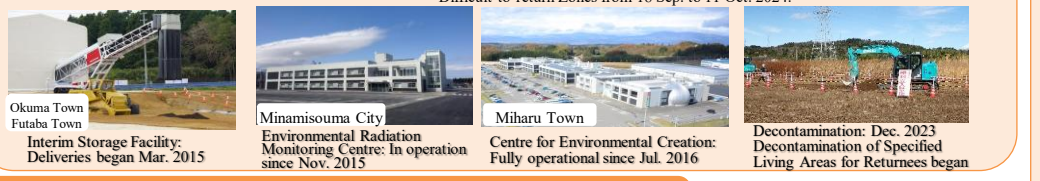
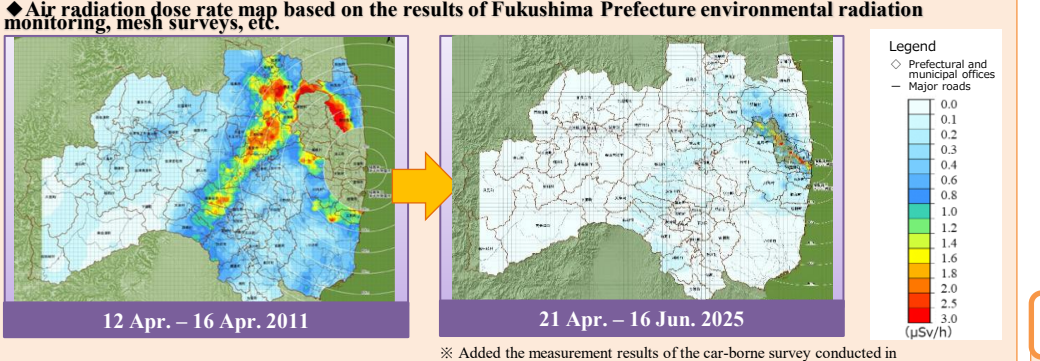
Impacts from the earthquake and tsunami knocked out all electricity to the Fukushima Daiichi Nuclear Power Station, including emergency power sources, leaving the plant unable to cool its reactors. As a result of damage to its reactors, large amounts of radiative materials were released into the atmosphere, forcing the long-term evacuation of nearby residents.

Situation Surrounding Evacuation

Evacuation orders are being lifted as the environment improves for the return of residents. The number of evacuees within and outside the prefecture, once marked at about 160,000 as its highest, has decreased to about 23,000.



Environmental Recovery



Public Infrastructure Development



Promotion of Renewable Energy

Aiming to become a pioneer in renewable energy, efforts are underway to expand the deployment of renewable energy and achieve a Hydrogen-based Society.

◆ Renewable Energy Deployment Target (aiming for 100% by around 2040)

Track Record of RE Adoption (Crude Oil Equivalent)

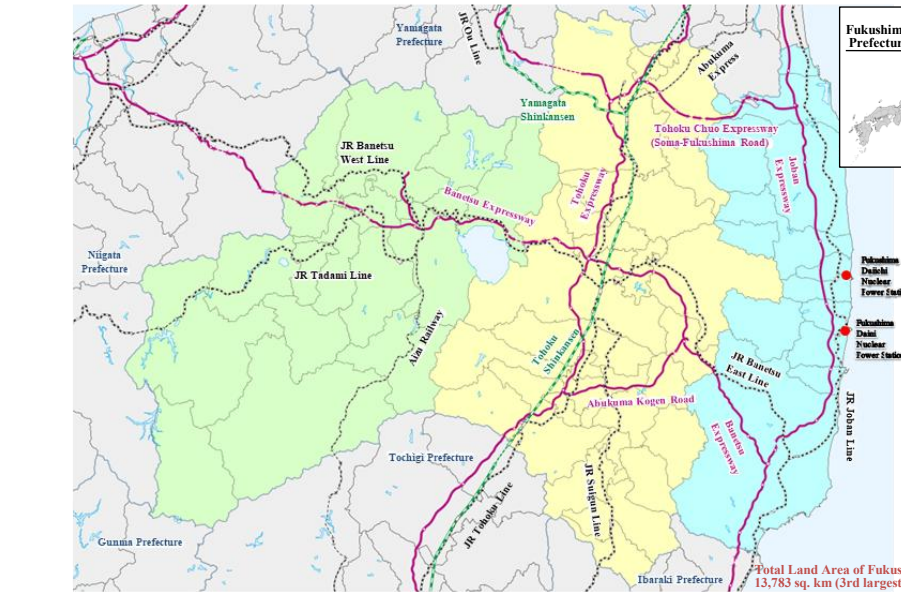
Hub for Research: Fukushima Renewable Energy Institute, AIST (FREA)
Biomass: Green Power Aizu Woody biomass power station
Wind Power: Koriyama-Nunobiki Kogen wind farm
Solar Power: Perovskite solar cells

Use of ICT and robots: JAEA Naraha Center for Remote Control Technology Development
Fukushima Medical Device Development Support Centre
Cluster of aerospace-related industries: The Fukushima Robot Test Field, Fukushima Hydrogen Energy Research Field, Fukushima Institute for Research, Education and Innovation (F-REI)

Aizu Region and Minami-Aizu District
Climate: The region sees heavy snowfall in winter, known for having a very distinct four seasons.
Culture: Traditional industries, agriculture, forestry, and other industries that take advantage of the unique characteristics across the region are thriving.

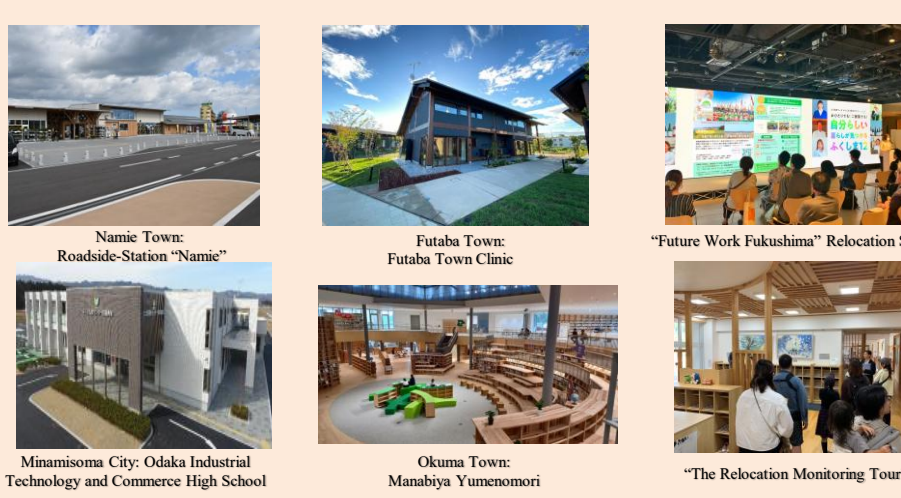
Central Region Ken-poku (northern), Ken-chu (central) and Ken-nan (southern) Districts
Climate: Some areas in the basin get hot and humid in summer, moderate snowfall in winter.
Culture: Blends both urban and rural nature with a well-developed transportation network.

Coastal Region Soso and Iwaki Districts
Climate: Summers are not too hot and winters are the warmest in the prefecture with very little snowfall.
Culture: Hydrogen-related industries are expanding. The robotics and renewable energy industries also stand out as national projects.



Improvement of Living Conditions & Promotion of Relocation

While working to improve the living environment for evacuees to return, efforts will also be made to increase exchange and related populations, and to promote relocation and permanent settlement.



Promoting the Fukushima Innovation Coast Framework

A national project that aims to build a new industrial infrastructure to regain the lost industries in the region. The Fukushima Innovation Coast Framework Promotion Organization plays a pivotal role in the implementation of the initiative. On 1 Apr. 2023, the Fukushima Institute for Research, Education and Innovation (F-REI), which is also expected to further develop the initiative, was established in Namie Town.

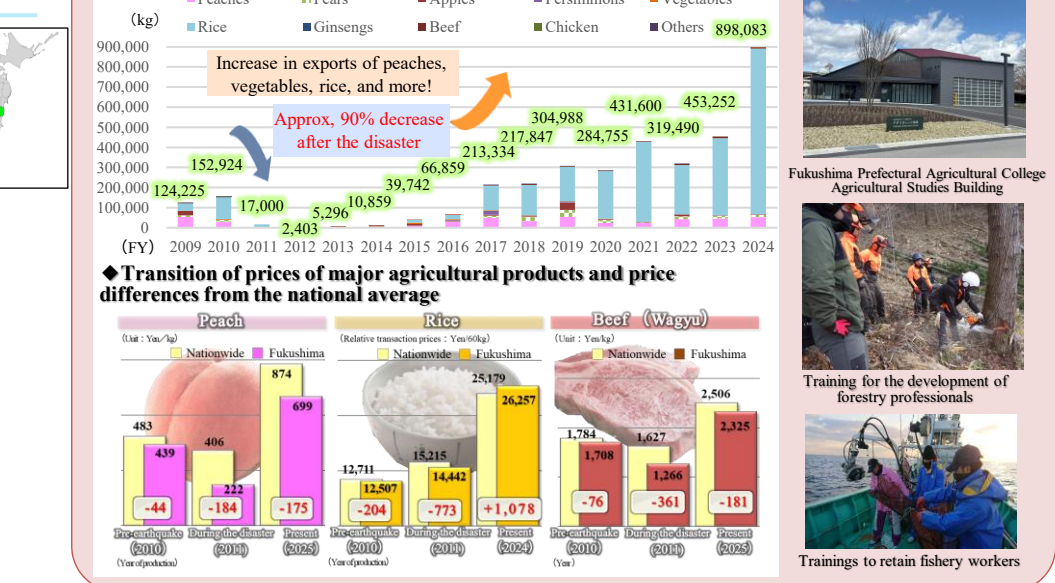
◆ 6 priority fields

- I Decommissioning
- II Robots and Drones
- III Energy, Environment and Recycling
- IV Agriculture, Forestry and Fisheries Industries
- V Healthcare-related industries
- VI Aerospace industries

Groundbreaking ceremony for F-REI's headquarters (Apr. 2025)
F-REI facility conceptual drawing

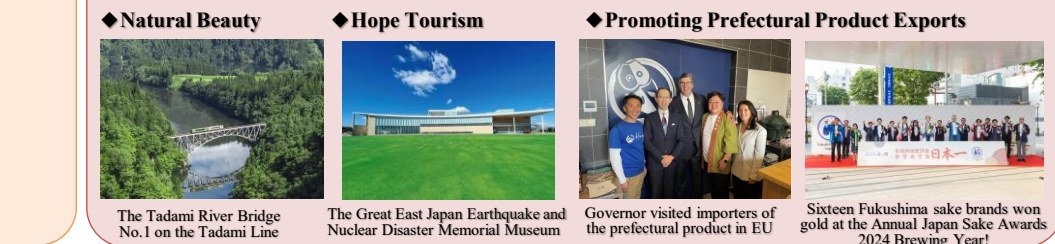
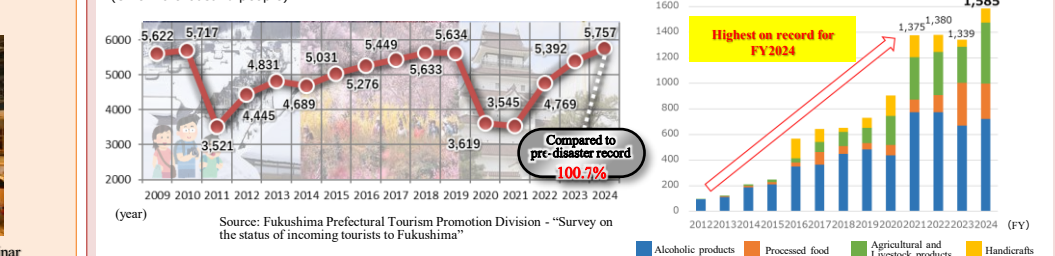
Agriculture, Forestry, and Fisheries

Exports exceeded pre-disaster levels, reaching the highest export volume ever in FY2024. On the other hand, while the price of locally produced agricultural products of Fukushima generally shows signs of recovery, the price difference from the national average has not yet been restored for some items.



Recovery of Tourism & Prefectural Products

The number of inbound tourists has recovered from the impacts of COVID-19 pandemic. Exports of prefectural products reached a record high in FY2024.



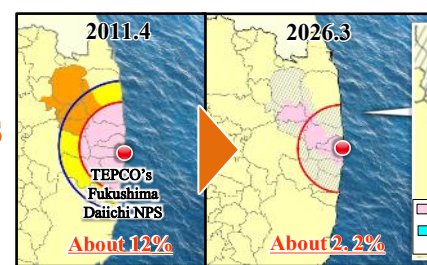
Towards the Realisation of a "New Fukushima" - Tracing the Path of Recovery (2/2)

Steady Reconstruction and Revitalisation of Evacuation Zones

Development Status of Living Environment in 15 Municipalities (Residential rate As of 1 Feb. 2026)

25 Mar. 2026

Medical ... ● Education... ● Welfare... ● Commerce ... ● Other... ●



Evacuation-Designated Zones, which accounted for approximately 12% of the total prefectural land immediately after the disaster, have been reduced to about 2.2%. Specified Reconstruction and Revitalization Base Areas and Specified Living Areas for Returnees have been established within the Difficult-to-return Zones for further development of the living environment.

Shinchi Town

- Sep. 2016 ● Completion of Shinchi Town Fire and Disaster Prevention Centre
- Dec. 2016 ● Resumption of the JR Joban Line between Soma and Hamayoshida
- Nov. 2018 ● Completion of Shinchi Energy Centre
- Apr. 2019 ● Reopening of Shinchi Marine Fishing Park
- Apr. 2019 ● Completion of commercial complex
- Jul. 2019 ● Reopening of Tsurushihama Swimming Beach
- Oct. 2019 ● Unveiling of Great East Japan Earthquake Cenotaph
- Dec. 2019 ● Opening of Tsurushi Disaster Prevention Green Space Park [Photo]
- Aug. 2020 ● Opening of Shinchi Cultural Exchange Centre
- Dec. 2020 ● Reopening of Shinchi Regional Wholesale Market (Tsurushi Fishing Port)



Iitate Village

- Aug. 2016 ● Opening of Furcui-kan community centre
- Sep. 2016 ● Resumption of medical services at Iitate Clinic
- Mar. 2017 ● [Evacuation order lifted except for the Difficult-to-return Zone]
- Aug. 2017 ● Opening of the Iitate Village Michi-no-Eki (Roadside Station) "Madeikan" [Photo]
- Apr. 2018 ● [Certification of the Plans for the Specified Reconstruction and Revitalization Base Areas of Iitate Village]
- Apr. 2018 ● Reopening of elementary, junior high school and certified childcare centre within the village
- Sep. 2018 ● Resumption of community bus service
- Apr. 2020 ● Opening of a 9-year compulsory education school "Iitate Kibo-no-Sato Gakuen"
- May 2023 ● [Evacuation order lifted for the Specified Reconstruction and Revitalization Base Areas & Nagadoro Magata Park]
- Jul. 2024 ● Opening of Kirari Agricultural Training Hall
- Mar. 2025 ● [Evacuation order lifted for areas within the Difficult-to-return Zone, including sites for compost production facilities]
- May. 2025 ● Opening of Iitate Village commercial facility (Hashi Drug Iitate Store)



Residential rate 34.7%

Kawamata Town

- Jul. 2015 ● Commencement of Yamakiya District Revitalisation Mega Solar Power Generation Project
- Oct. 2016 ● Resumption of medical service at Yamakiya Clinic
- Mar. 2017 ● [Evacuation order completely lifted]
- Jul. 2017 ● Opening of a reconstruction hub and commercial facility "Tonya no Sato" [Photo]
- Apr. 2018 ● Reopening of elementary and junior high schools in the Yamakiya District
- Mar. 2023 ● Completion of National Road Route 114 Yamakiya section and National Road Route 349 Otsunagi section



(Yamakiya District) Residential rate 53.3%

Katsurao Village

- Jun. 2016 ● [Evacuation order lifted excluding areas with the Difficult-to-return Zone]
- Nov. 2017 ● Resumption of medical services at Katsurao Village Clinic
- Apr. 2017 ● Reopening of Maruichi Store
- Jul. 2017 ● Reopening of Ishii Shokudo restaurant, Yamazaki Y Shop Yamasa
- Apr. 2018 ● Resumption of kindergartens, elementary and junior high schools within the village
- May 2018 ● [Certification of the Plans for the Specified Reconstruction and Revitalization Base Areas of Katsurao Village]
- Jun. 2018 ● Opening of Katsurao village community revitalisation centre "Azalea"
- Jun. 2022 ● [Evacuation order lifted in the Specified Reconstruction and Revitalization Base Areas]
- Mar. 2024 ● Restaurant Masa tavern opened at Katsurao Village Accommodation & Exchange Facility Sescragi-so [Photo]
- Mar. 2025 ● [Evacuation order lifted for wind power generation site within the Difficult-to-return Zone]
- May. 2025 ● Commencement of operations by Katsurao Fuyoku and Fukushima Fukko Fuyoku wind power companies
- Jul. 2025 ● [Certification of the Plans for the Reconstruction and Revitalization of Specified Living Areas for Returnees of Katsurao Village]



Residential rate 39.4%

Tamura City

- Jul. 2011 ● Resumption of medical service at Miyakoji Clinic and Dental Clinic
- Mar. 2012 ● Reopening of Miyakoji Madoka-So, an intensive care home for the elderly
- Apr. 2014 ● [Evacuation order completely lifted]
- Apr. 2014 ● Reopening of elementary and junior high schools within Miyakoji Machi
- Apr. 2014 ● Opening of a publicly-funded commercial facility "Domo"
- Mar. 2016 ● Opening of confectionery "Miyakoji Sweets Yui"
- Apr. 2017 ● Opening of Miyakoji Elementary School
- Jul. 2019 ● Opening of Tamura Municipal Hospital
- Apr. 2023 ● Opening of Ohisama Dome
- Jun. 2024 ● Opening of Challenge House Miyakoji [Photo]
- Oct. 2024 ● Completion of Tamura City Eastern Industrial Park (Yamane Area, Tokiwa Town)
- Dec. 2025 ● Grand opening of "Korasshe Miyakoji", a commercial complex [Photo]



(Miyakoji District) Residential rate 87.7%

Kawauchi Village

- Apr. 2012 ● Reopening of the municipal health, welfare and medical facility "Yufune"
- Apr. 2012 ● Reopening of elementary and junior high schools, nurseries within the village
- Oct. 2014 ● [Evacuation order lifted for the Preparation Area for Lift of Evacuation Orders]
- Nov. 2015 ● Opening of "Kawauchi", an intensive care home for the elderly
- Mar. 2016 ● Opening of commercial facility "Shopping Centre YO-TASHI"
- Apr. 2016 ● Opening of "Moritara Pool" [Photo]
- Jun. 2016 ● [Evacuation order completely lifted]
- Apr. 2021 ● Opening of an integrated elementary and junior high school
- Apr. 2021 ● Opening of a certified daycare centre
- Jun. 2021 ● Opening of "Kawauchi Winery"
- Nov. 2024 ● Opening of Craft Gin Distillery "natradistill"



Residential rate 84.2%

Hirono Town

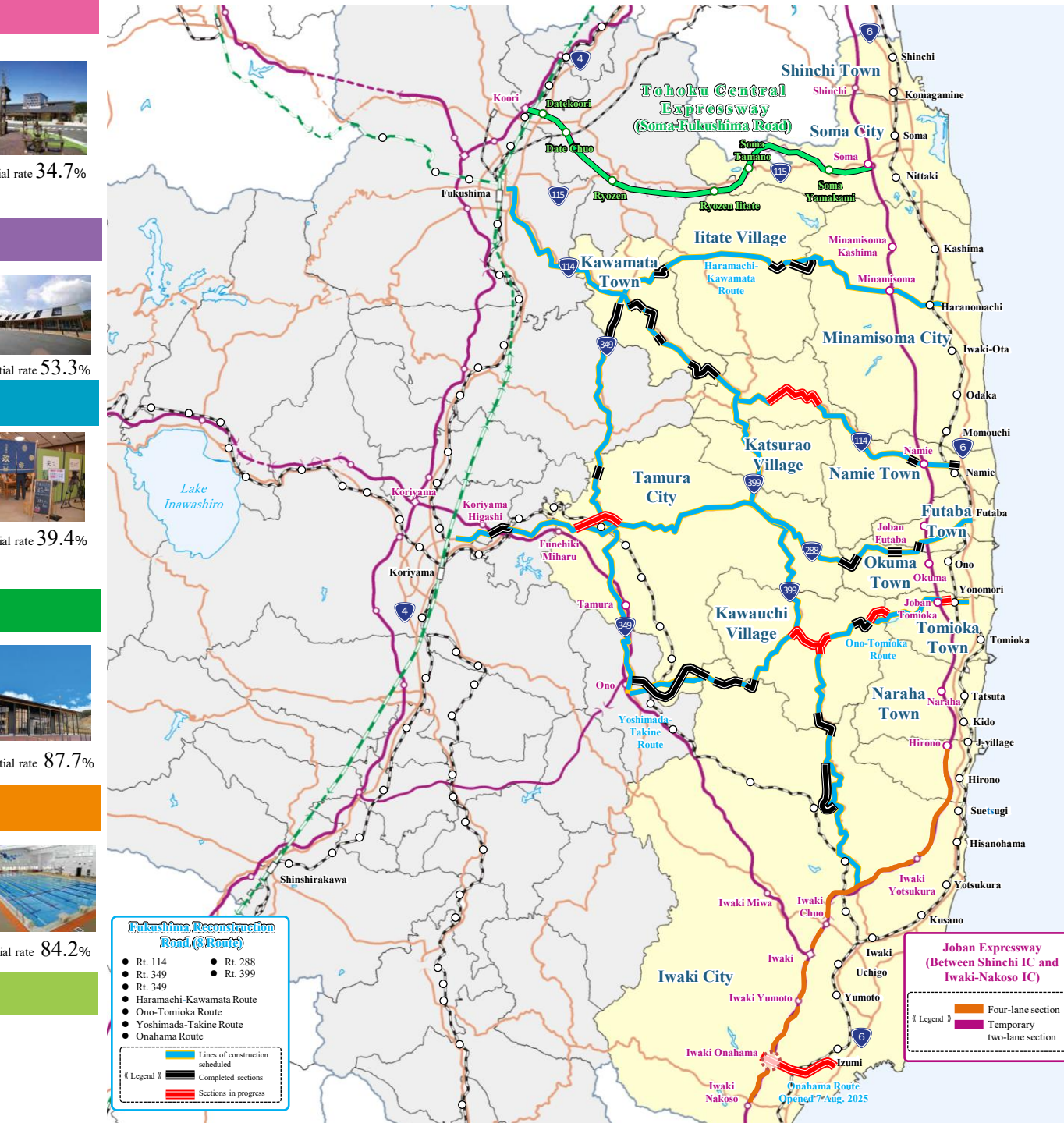
- Aug. 2011 ● Reopening of Baba Clinic
- Jan. 2012 ● Reopening of Hirono Pharmacy
- Mar. 2012 ● [Return of Town Hall, lifting of mayor's evacuation order] (Emergency Evacuation Preparation Zone (national designation) lifted on 30 Sep. 2011)
- Apr. 2012 ● Reopening of "Hanabusasen", an intensive care home for the elderly
- Aug. 2012 ● Reopening of elementary and junior high schools within the town
- Apr. 2015 ● Opening of Futaba Future High School
- Mar. 2016 ● Grand opening of a commercial facility, "Hirono Terrace"
- Apr. 2019 ● Opening of Futaba Future Junior High School
- Apr. 2019 ● Opening of a certified childcare centre
- Apr. 2019 ● Grand opening of J-Village
- Mar. 2022 ● Elevator installed on Bridge to the Future
- Mar. 2023 ● Developed Higashi-machi Industrial Park
- May. 2023 ● Developed East side of Hirono Station (Hirono Station East New Town) [Photo]
- Nov. 2024 ● Opening of new station building for Hirono Station on JR Joban Line



Residential rate 91.6%

Iwaki City

- Apr. 2017 ● Opening of Iwaki Green Base
- Jul. 2017 ● Opening of Iwaki FC Park
- Jul. 2018 ● Grand opening of "AEON Mall Iwaki Onahama"
- Dec. 2018 ● Establishment of Iwaki Medical Centre
- Sep. 2019 ● Training camp for Samoa national team for Rugby World Cup
- May 2020 ● Opening of Iwaki 3.11 Memorial and Revitalization Museum [Photo]
- Sep. 2022 ● Opening of National Road Route 399 Junonji construction section
- Nov. 2022 ● Iwaki FC won J3 championship and promoted to J2
- Apr. 2023 ● Establishment of Iwaki Office of Fukushima Institute of Research, Education and Innovation (F-REI)
- Dec. 2024 ● CIFAL Japan International Training Centre established
- Aug. 2025 ● Opening of Onahama Road
- Sep. 2025 ● Grand opening of Michi-no-Eki (Roadside Station) "Iwaki Lalamew"



Naraha Town

- Jun. 2014 ● Reopening of Tatsuta Station on JR Joban Line
- Sep. 2015 ● [Evacuation order completely lifted]
- Feb. 2016 ● Establishment of Futaba Medical Centre-affiliated Futaba Revitalization Clinic
- Mar. 2016 ● Reopening of "Lily Garden", an intensive care home for the elderly
- Apr. 2017 ● Reopening of elementary, junior high schools and certified childcare centres within the town
- Jun. 2018 ● Grand opening of "Kokonara Shopping Mall" and "Naraha CANvas"
- Jul. 2018 ● Partial reopening of J-Village
- Apr. 2019 ● Opening of an indoor sports facility, "Naraha Sky Arena"
- Apr. 2019 ● Grand opening of J-Village
- Apr. 2019 ● Reopening of a hot-spring and health facility at Michi-no-Eki (Roadside Station) "Naraha"
- Jun. 2020 ● Reopening of Michi-no-Eki Naraha Product Promotion Centre
- Jun. 2020 ● Reopening of Naraha Pharmacy
- Dec. 2020 ● Opening of new station building for Tatsuta Station on JR Joban Line
- Jun. 2022 ● Opening of "CODOL", a support centre for relaxation and living
- Apr. 2023 ● Opening of Community Activity Centre "Mazarasse" [Photo]
- Jan. 2025 ● Futaba Support School relocated to a new building



Residential rate 71.1%

Tomioka Town

- Mar. 2017 ● Grand Opening of "Sakura Mall Tomioka"
- Apr. 2017 ● [Evacuation orders lifted, excluding the Difficult-to-return Zone]
- Oct. 2017 ● Reopening of service and opening of new station building for Tomioka Station on JR Joban Line
- Mar. 2018 ● [Certification of the Plans for the Specified Reconstruction and Revitalization Base Areas of Tomioka Town]
- Apr. 2018 ● Opening of Futaba Medical Centre-affiliated Hospital
- Apr. 2018 ● Resumption of elementary and junior high schools within the town
- Apr. 2019 ● Opening of certified childcare centre
- Mar. 2020 ● Reopening of service and opening of new station building for Yonomori Station on JR Joban Line
- Mar. 2021 ● Opening of community centre, "Wanpaku Park" [Photo]
- Jul. 2021 ● Establishment of the Historical Archive Museum of Tomioka
- Jul. 2021 ● Opening of Fukushima 12 Municipalities Relocation Support Centre
- Apr. 2022 ● Opening of Co-living Support Centre "Sakura no Sato"
- Apr. 2023 ● [Evacuation order lifted in the Specified Reconstruction and Revitalization Base Areas]
- Sep. 2023 ● Opening of "TomiokaWorkingBase" satellite office
- Nov. 2023 ● [Lifting of evacuation order for cemeteries and meeting places (specific sites) as well as access routes (specific routes) in the Difficult-to-return Zone]
- Feb. 2024 ● [Certification of the Plans for the Reconstruction and Revitalization of Specified Living Areas for Returnees of Tomioka Town] (Certification of Changes, Feb. 2026)
- Apr. 2024 ● Opening of an after-school children's club
- May. 2025 ● Opening of the Tomioka Winery



Residential rate 23.8%

Okuma Town

- Nov. 2017 ● [Certification of the Plans for the Specified Reconstruction and Revitalization Base Areas of Okuma Town]
- Apr. 2019 ● [Evacuation orders lifted excluding the Difficult-to-return Zone]
- Apr. 2019 ● Completion of New Town Hall in Ogawara District
- Aug. 2019 ● First shipment from Nexus Farm Okuma strawberry farm
- Mar. 2020 ● Reopening of Ono Station on JR Joban Line
- Apr. 2020 ● Opening of group home for the elderly "Okuma Mominoki-en"
- Feb. 2021 ● Opening of Okuma Town clinic
- Apr. 2021 ● Opening of commercial facility "Okumart"
- Oct. 2021 ● Opening of accommodation facility with hot spring "Hot Okuma" and a community facility "Linkru Okuma"
- Apr. 2022 ● Opening of an integrated elementary and junior high school for compulsory education in Aizuwakamatsu City
- Jun. 2022 ● [Evacuation order lifted in the Specified Reconstruction and Revitalization Base Areas]
- Jul. 2022 ● Opening of Okuma Incubation Centre for start-ups
- Jul. 2022 ● Opening of National Road Route 288 Nogamikotsuka construction section
- Apr. 2023 ● Okuma Municipal "Manabiya Yumenomori" (compulsory education school and certified childcare centre) opened within the town, later moved into a new school building in August at the same year
- Sep. 2023 ● [Certification of the Plans for the Reconstruction and Revitalization of Specified Living Areas for Returnees of Okuma Town] (Certification of Changes, Feb. 2024)
- Mar. 2024 ● Grand opening of "CREVA Okuma" industrial exchange facility, "Kuma SUN Terrace" commercial facility and a station-front square, in Ono Station west. [Photo]



Residential rate 11.1%